

**CERTIFIED RECORD OF LAND CORNER MONUMENTATION**

**History of original corner establishment:**

Original Corner set by Henry W. Cooke in April 1884 under contract No. 494, dated January 11, 1884

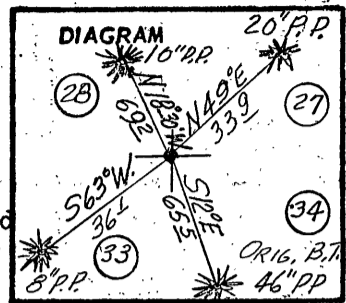
**Surveyor General's notes state:**

80.00 Set a basalt stone 14x12x11 ins. 9 ins in the ground for cor to Secs 27, 28, 33 & 34 marked with 1 notch on the S. and 3 notches on the E. edges from which

A pine 50 ins diam bears S. 15° E. 95 lks marked T17S. R32E. S.34 BT

A pine 40 ins diam bears S. 52° W. 140 lks dist. marked T17S R32E S 33 BT

No other trees within limits. Raised a mound of stone



**Description of corner evidence found:**

Found mound of rock, could find no marks on 14x12x11 rock. Found old BT at S. 12° E. at 65.5 feet. Found dead & down BT S. 52° W at 92.2 feet.

**Description of monument and accessories I established to perpetuate the original location of this corner**

Set a metal monument consisting of a 2 1/2" brass cap mounted on a 2" (I.D.) iron pipe 30" in length, flared at bottom, buried 18" in ground with a mound of rock surrounding the pipe, rock believed to be original corner buried alongside; from which

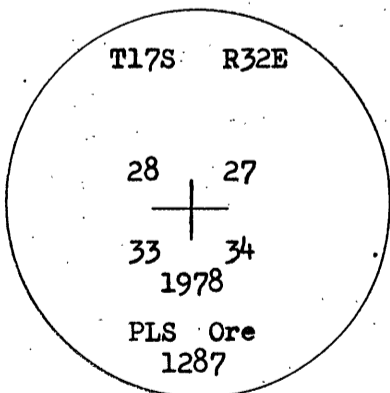
A PP 46" DBH bears S.12° E. a distance of 65.5 feet. This is original BT, and per notes is scribed T17S R32E, S.34, BT. Scribing is legible but somewhat grown over. Not disturbed by cutting into.

A PP 8" DBH bears S. 63° W. a distance of 36.1 ft., scribed T17S R32E S.33, BT

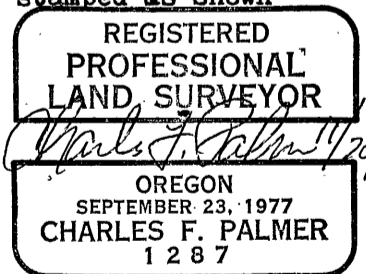
A PP 10" DBH bears N. 18°30' W. a distance of 69.2 ft., scribed T17S R32E S. 28, BT

A PP 20" DBH bears N. 49° E. a distance of 33.9 ft. scribed T17S R32E S. 27, BT

All BT's are banded with red paint and carry a BT sign. New BT's have a brass washer at base of BT blaze.



The brass cap on the corner monument is stamped as shown



Office of Surveyor County of Grant  
 State of Oregon, I hereby certify that the within instrument was filed in this office  
 for record on the 27 day of Nov, 1978, at 10 o'clock A.m., (signed)  
Robert D. Begett by \_\_\_\_\_  
 (COUNTY OFFICIAL) (DEPUTY)